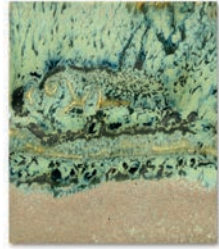


Potter's Choice

Cone 5-6

Layering

PC-1
Saturation
Metallic
over
PC-43
Toasted Sage



PC-2
Saturation
Gold
over
PC-43
Toasted Sage



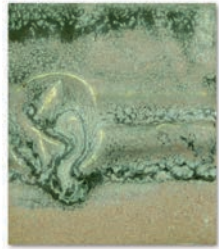
PC-20
Blue Rutile
over
PC-43
Toasted Sage



PC-27
Tourmaline
over
PC-43
Toasted Sage



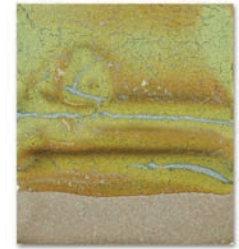
PC-4
Palladium
over
PC-43
Toasted Sage



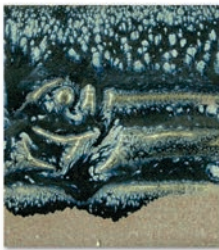
PC-21
Arctic Blue
over
PC-43
Toasted Sage



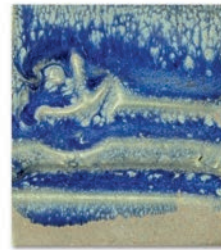
PC-28
Frosted
Turquoise
over
PC-43
Toasted Sage



PC-12
Blue
Midnight
over
PC-43
Toasted Sage



PC-23
Indigo
Float
over
PC-43
Toasted Sage



PC-32
Albany Slip
Brown
over
PC-43
Toasted Sage



PC-43 Layering Notes: Apply two layers of base coat. Apply two layers of top coat. (Let dry between coats.)

Clay: AMACO® Buff Stoneware Clay #46

over
PC-43

PC-33
Iron Lustre
over
PC-43
Toasted Sage



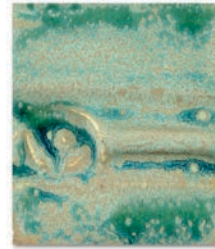
To learn more:
www.potterschoice.info

Color may vary between printed copies.

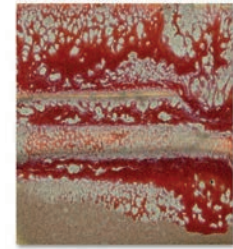
PC-35
Oil Spot
over
PC-43
Toasted Sage



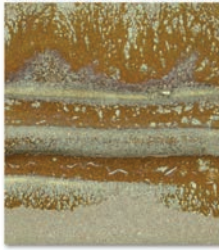
PC-45
Dark Green
over
PC-43
Toasted Sage



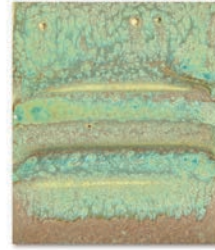
PC-55
Chun Plum
over
PC-43
Toasted Sage



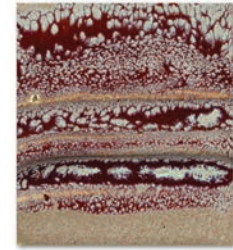
PC-37
Smoked
Sienna
over
PC-43
Toasted Sage



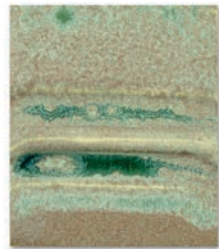
PC-46
Lustrous
Jade
over
PC-43
Toasted Sage



PC-59
Deep
Firebrick
over
PC-43
Toasted Sage



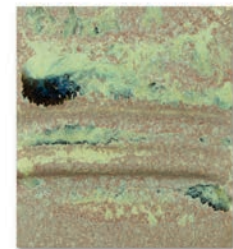
PC-40
True
Celadon
over
PC-43
Toasted Sage



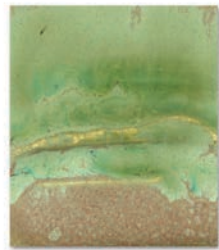
PC-49
Frosted
Melon
over
PC-43
Toasted Sage



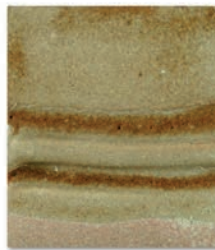
PC-60
Salt Buff
Speckle
over
PC-43
Toasted Sage



PC-42
Seaweed
over
PC-43
Toasted Sage



PC-50
Shino
over
PC-43
Toasted Sage



PC-61
Textured
Amber
over
PC-43
Toasted Sage



The ACMI AP (Approved Product) Seal shows that the product is certified to be safe for use by children grades K-6.



The ACMI CL (Caution Label) Seal shows that the product is certified to be safe for use by children grades 7-12 and adults.

PC-53
Ancient
Jasper
over
PC-43
Toasted Sage



PC-62
Textured
Amber Brown
over
PC-43
Toasted Sage

